

DESCRIPTION

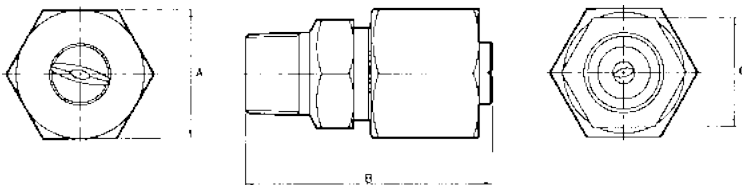
- For high pressure applications
- Dovetail connection nozzle/body for positive alignment.
- 3 piece design with Male BSPT thread or Welding Nipple body
- Spray pattern has a knife-like cutting edge.
- Normal spray angles of 25° and 32°.
- Orifice is offset 15° to axis of dovetail.
- Nozzle is in 416 Hardened Stainless Steel. Bodies and cap in standard Stainless steel



SPECIFICATIONS

Type	Orifice Mm	Flow rate (lpm) @ Pressure (bar) – for 25° and 32°														
		40	55	70	85	100	110	125	140	150	165	180	195	210	240	275
DD 6	1.5	8.7	10.2	11.5	12.6	13.7	14.4	15.3	16.2	16.8	17.6	18.4	19	20	21	23
DD 10	2.0	15	17	19	21	23	24	26	27	28	30	31	32	33	35	38
DD 12.5	2.2	18	21	24	26	29	30	32	34	35	37	38	40	41	44	47
DD 15	2.4	22	25	28	31	34	36	39	40	42	44	46	48	49	53	57
DD 20	2.8	29	34	38	42	45	48	51	54	56	59	61	64	66	71	76
DD 25	3.2	36	43	48	53	57	60	64	68	70	74	77	80	83	88	94
DD 30	3.6	43	51	57	63	68	72	78	81	84	88	92	95	99	106	113
DD 40	4.0	57	68	76	84	91	96	102	109	112	117	122	127	133	141	151
DD 50	4.4	72	85	95	105	114	119	127	135	140	147	153	159	166	177	189
DD 60	4.8	86	102	114	127	135	142	152	160	166	174	182	190	198	212	227

DIMENSIONS



	Assemblies			
	A hex	B	C Hex	Weight
	(mm)			g
3/4" DDM	41.3	79.2	38	494
1" DDM	41.3	79.2	38	551
DDW	41.3	70	35	410

HOW TO ORDER

TEXTRA D Type Material
TEXTRA DD 30 – 25° (nozzle tip only)