

DESCRIPTION

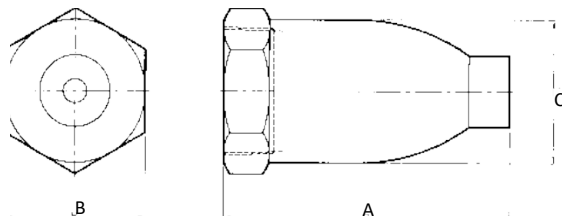
- Uniform distribution of droplets in solid cone spray pattern.
- Spray droplet size increases as flow increases at the same pressure.
- Core imparts the necessary swirl to produce a solid spray pattern.
- Hexagon body for easy installation eliminates distortion of orifice during installation.
- Available in Cast Iron and Stainless Steel
- Stainless steel version look resembles BN look



TECHNICAL DATA

TYPE	Thread				Flow rate (lpm) @ pressure (Bar)												Spray angle (°) @ pressure (Bar)			
	1 1/4"	1 1/2"	2"	3"	0.2	0.35	0.7	1	1.5	2	3	4	5	6	7	0.35	0.7	1.5	6	
23	<input checked="" type="checkbox"/>				38,3	49,4	64,0	75,4	90	103	117	138	147	160	173	108	112	112	75	
28	<input checked="" type="checkbox"/>				46,4	59,5	78,2	91,5	108	118	145	163	179	192	206	100	108	105	75	
35	<input checked="" type="checkbox"/>				58,9	75,9	101,1	115	133	137	179	206	225	258	274	102	105	112	70	
37		<input checked="" type="checkbox"/>			62,9	80,5	106	125	146	166	199	216	252	274	294	116	116	120	70	
42	-	<input checked="" type="checkbox"/>			69,6	89,2	119	138	164	187	218	248	275	302	323	110	115	120	75	
47	-	<input checked="" type="checkbox"/>			76,3	98,8	133	154	184	210	254	292	319	348	373	107	110	110	70	
52	-	<input checked="" type="checkbox"/>			86,6	110	146	170	203	227	277	318	353	-	-	112	117	120	-	
66	-		<input checked="" type="checkbox"/>		105	137	188	219	259	294	355	401	-	-	-	100	105	103	-	
73	-		<input checked="" type="checkbox"/>		116	149	204	240	286	325	390	452	-	-	-	110	120	130	-	
78	-		<input checked="" type="checkbox"/>		125	161	220	256	306	347	420	-	-	-	-	110	120	120	-	
89	-		<input checked="" type="checkbox"/>		141	183	247	291	344	403	486	-	-	-	-	115	110	110	-	
96	-		<input checked="" type="checkbox"/>		152	197	270	313	375	441	515	-	-	-	-	105	105	110	-	
156	-			<input checked="" type="checkbox"/>	272	353	489	625	720	-	-	-	-	-	-	110	112	112	-	
198	-			<input checked="" type="checkbox"/>	344	446	613	795	919	-	-	-	-	-	-	105	110	105	-	
224	-			<input checked="" type="checkbox"/>	370	480	654	902	1037	-	-	-	-	-	-	100	105	105	-	

DIMENSIONS



Thread	DIMENSIONS		
	A Hex	B	C
1 1/4"	95	48	48
1 1/2"	108	56	54
2"	136	73	67
3"	200	98	98

HOW TO ORDER

Thread BY type material

2" BY 96 SS303