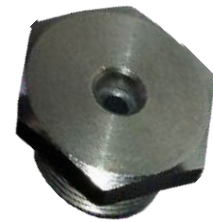


## DESCRIPTION

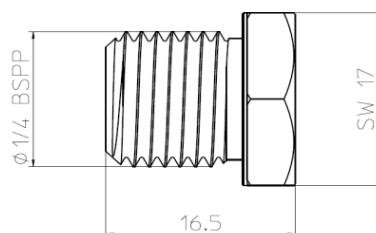
- Full jet nozzle consisting of nozzle body and nozzle insert
- Nozzle body with flat head and short 1/4" BSPP male thread
- Flow-optimized inlet channel
- Long service life even with media with a high solids content
- Nozzle body made of 1.4305
- Tungsten carbide nozzle insert



## SPECIFICATIONS

TYPE	Thread	eq. Drilling Mm	Flow Rate (lpm) @ Pressure (Bar)						
			3	5	10	50	100	200	300
1,8	1/4"	1,8	3,64	4,70	6,64	14,85	21,00	29,69	36,37
2	1/4"	2	4,50	5,81	8,22	18,38	26,00	36,76	45,02
2,2	1/4"	2,2	5,46	7,05	9,97	22,29	31,53	44,59	54,61
2,4	1/4"	2,4	6,51	8,41	11,89	26,58	37,59	53,16	65,11
2,5	1/4"	2,5	7,07	9,13	12,91	28,87	40,82	57,73	70,71
2,6	1/4"	2,6	7,65	9,88	13,97	31,25	44,19	62,49	76,54
2,8	1/4"	2,8	8,89	11,48	16,23	36,29	51,32	72,58	88,89
3	1/4"	3	10,22	13,19	18,65	41,71	58,98	83,42	102,16
3,5	1/4"	3,5	13,94	17,99	25,45	56,91	80,48	113,81	139,39
4	1/4"	4	18,24	23,55	33,30	74,46	105,30	148,92	182,39
4,5	1/4"	4,5	23,12	29,84	42,20	94,37	133,46	188,74	231,15
5	1/4"	5	28,57	36,88	52,16	116,63	164,95	233,27	285,70

## DIMENSIONS



## HOW TO ORDER

Thread CAC-HM Type

**1/4" CAC-HM 2.5**