

**DESCRIPTION**

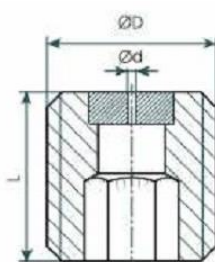
- Full jet nozzle consisting of nozzle body and sapphire or ruby insert
- Nozzle body as threaded pin with metric thread
- Long service life even with media with a high solids content
- Stainless steel nozzle body
- Operating pressure up to 1000 bar
- Use at temperatures up to 120°
- Other sizes available on request



**SPECIFICATIONS**

	Ød	Thread						Flow @ 100Bar
TYPE	Mm	M3	M4	M5	M6	M8	M10	Lpm
<b>0.10</b>	0.10	☑						0.045
<b>0.20</b>	0.20	☑						0.181
<b>0.30</b>	0.30	☑	☑	☑				0.407
<b>0.40</b>	0.40	☑	☑	☑				0.723
<b>0.50</b>	0.50	☑	☑	☑				1.129
<b>0.60</b>	0.60	☑	☑	☑	☑	☑	☑	1.626
<b>0.70</b>	0.70	☑	☑	☑	☑	☑	☑	2.213
<b>0.80</b>	0.80	☑	☑	☑	☑	☑	☑	2.981
<b>0.90</b>	0.90	☑	☑	☑	☑	☑	☑	3.659
<b>1.00</b>	1.00	☑	☑	☑	☑	☑	☑	4.517

**DIMENSIONS**



DIMENSIONS	
Ød	L mm
M3	4
M4	4
M5	5
M6	6
M8	8
M10	10

**HOW TO ORDER**

Thread Stiftschroef Sapphire Type  
**M4 Stiftschroef Sapphire 0.40**